



ENTRY SYSTEM USER GUIDE

Entry System User Guide


DISPLAY FEATURES & FUNCTIONS

The Citylink Entry System console elevates the sophistication of the space it occupies, while optimizing operational efficiency.

Standard display features and functions include:

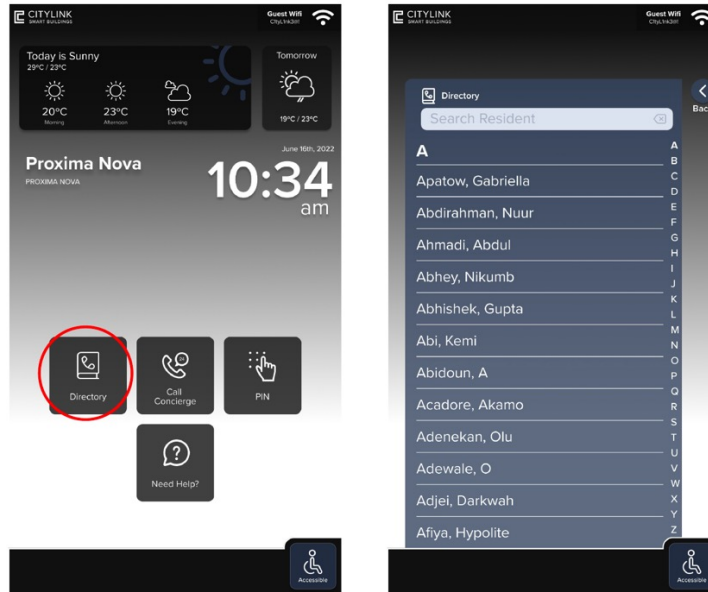


1. Guest Wi-Fi
2. Weather Widget
3. Property Name & Address
4. Date
5. Time
6. Background
7. Function Tiles

 Accessible Mode

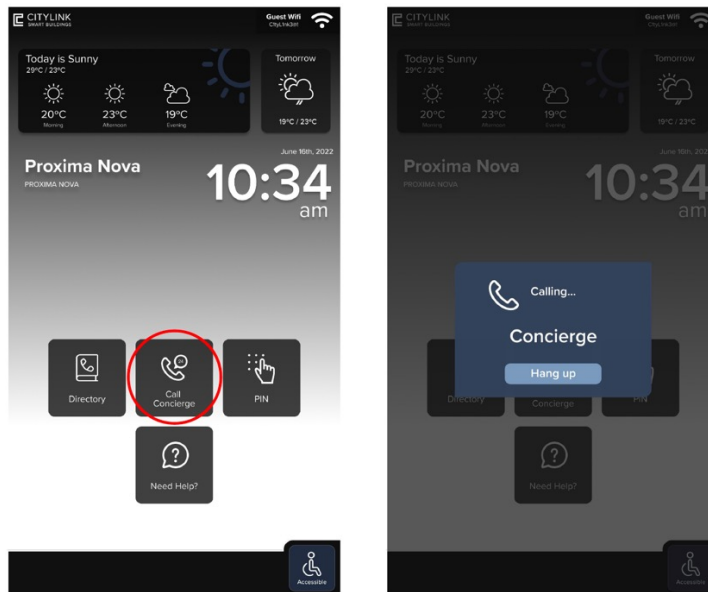
DIRECTORY

Easily navigate to property Occupants, Staff and Amenity spaces. To allow access to visitors or couriers, you must click the asterisk (*) button, which will open the door for the caller.



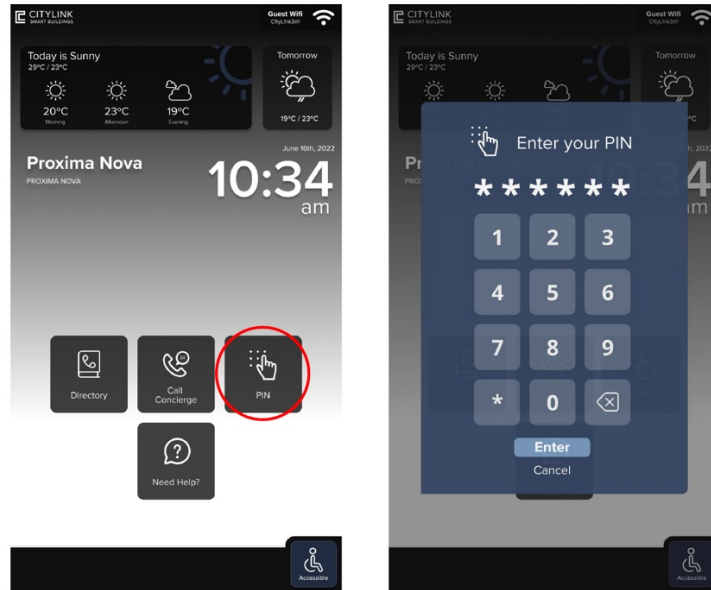
CALL CONCIERGE

Guests and Business Service Providers can connect with the property Concierge for assistance



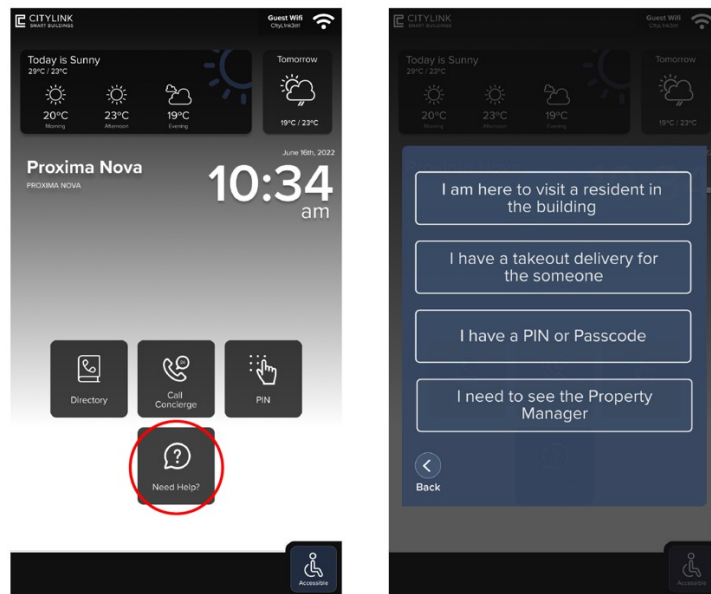
PIN CODE

Assigned and used by property Occupants, Guests and Business Service Providers as deemed appropriate by Property Management.



NEED HELP

Provides specific language to guide property Guests and Business Service Providers to the right result, the first time.



ACCESSIBLE

One touch of the Accessible tile lowers the display to height requirements defined by the 'Accessible Canada Act', enabling easy use of all Entry System features and functions. A second touch of the Accessible tile returns the display to default configuration.

